

QA2/QA2-60 - Product Overview

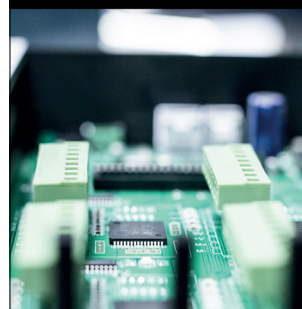


A truly revolutionary designed motorised wall bracket, the Quad Arm is the most elaborate and advanced TV wall mount offered on the market. Allowing 150 degrees bi-directional rotation with parallel forward track, the Quad Arm offers a step forward in functionality when recessing screens. Full cable management and sleek design complete a truly unique product offering from Future Automation.

Design Highlights

- ✓ Quiet smooth Action With Variable Speed Motion
- ✓ Full Cable Management
- ✓ Stylish Look and Finish
- ✓ Onboard Electronics
- ✓ Wide Range of Mounting Options

Onboard Electronics



Handbuilt in the UK

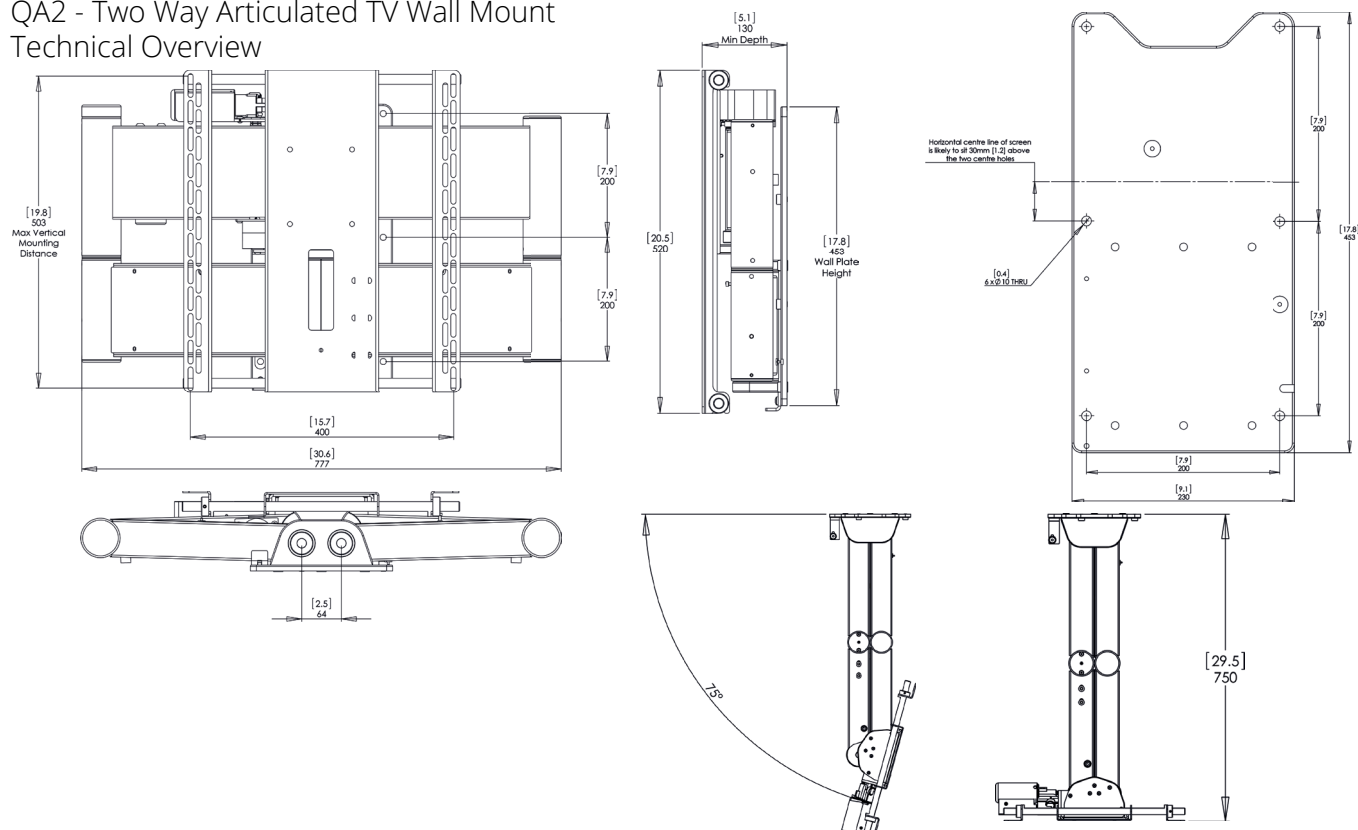


Specification

Product name	QA2	QA2-60
Recommended Screen Sizes	42" - 55"	60"-90"
Max. Screen Weight	45kg (100lbs)	80kg (175lbs)
Max. Rotation	75° Bi-Directional	75° Bi-Directional
Max. Extension From Wall	750mm (29.5")	910mm (35.8")
Max. VESA Spacing	VESA 400x500	VESA 800x700
Standard Finish	Satin Black Paint (RAL 9005)	Satin Black Paint (RAL 9005)

QA2/QA2-60 - Product Overview

QA2 - Two Way Articulated TV Wall Mount Technical Overview



QA2-60 - Two Way Articulated TV Wall Mount Technical Overview

