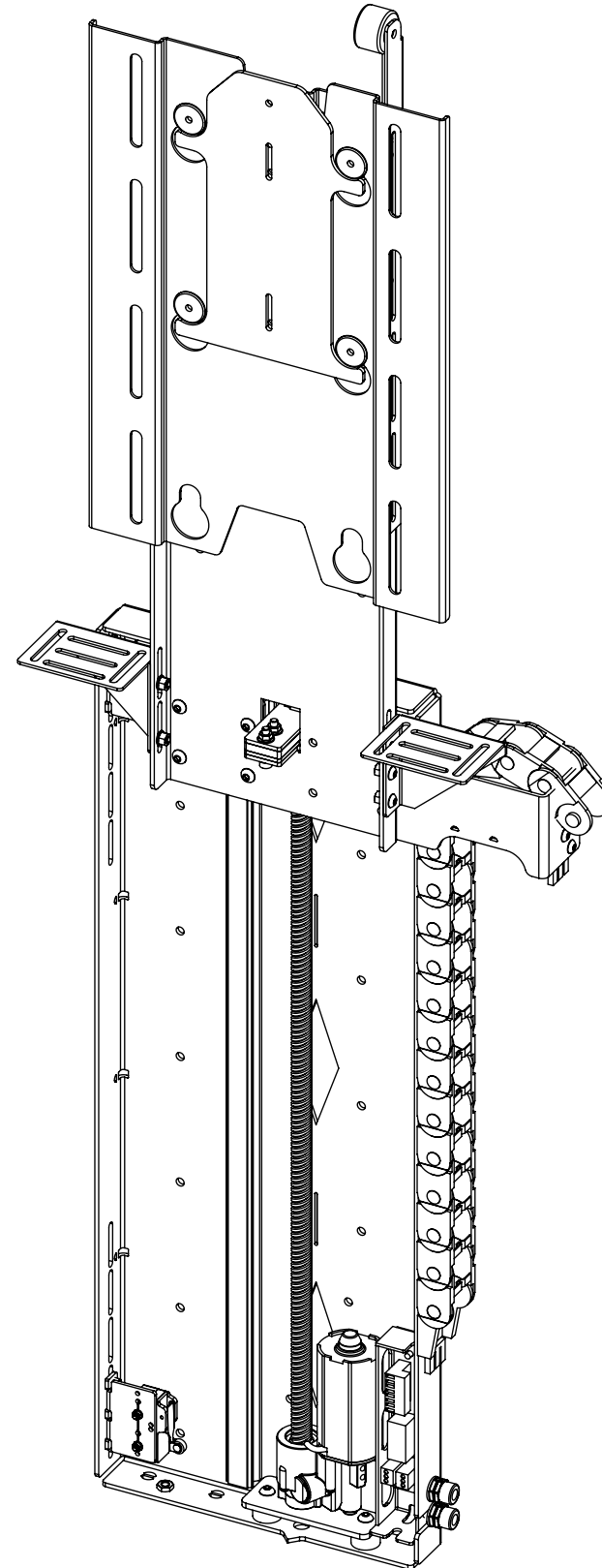


# LSL-PF 3

## LIFT SYSTEM LIGHT FOR PUSH UP FLAP



future automation



# LSL-PF 3

## LIFT SYSTEM LIGHT FOR PUSH UP FLAP



future automation

SPECIFICATION	MEASUREMENTS
Screen Sizes (Approx)	40"
Maximum Weight Capacity	25Kg (55lb)
Maximum Weight Capacity (Marine)	16Kg (35lb)
Maximum Screen Height	425mm (16.7")
Packaging Dimensions	1050mm (41.3") x 550mm (21.7") x 250mm (9.8")
Shipping Weight	20Kg (44lb)
Movement Type	Motorised
Power Supply Required	110V or 240V AC
Power Consumption	250-500W
Power Consumption Standby	3W
Decibel Rating	58dB
Mounting Patterns Supported	VESA 200 W x 300, 200 H
Control Options	IR Remote, RS232, Contact Closure
Product Options / Features	Specific B&O and Loewe mounts / adapters, Custom RAL paint finishes, Outdoor version
Package Contents	Mechanism, IR remote control
Marine Suitable	Yes (Indoor)

# LSL-PF 3

## LIFT SYSTEM LIGHT FOR PUSH UP FLAP

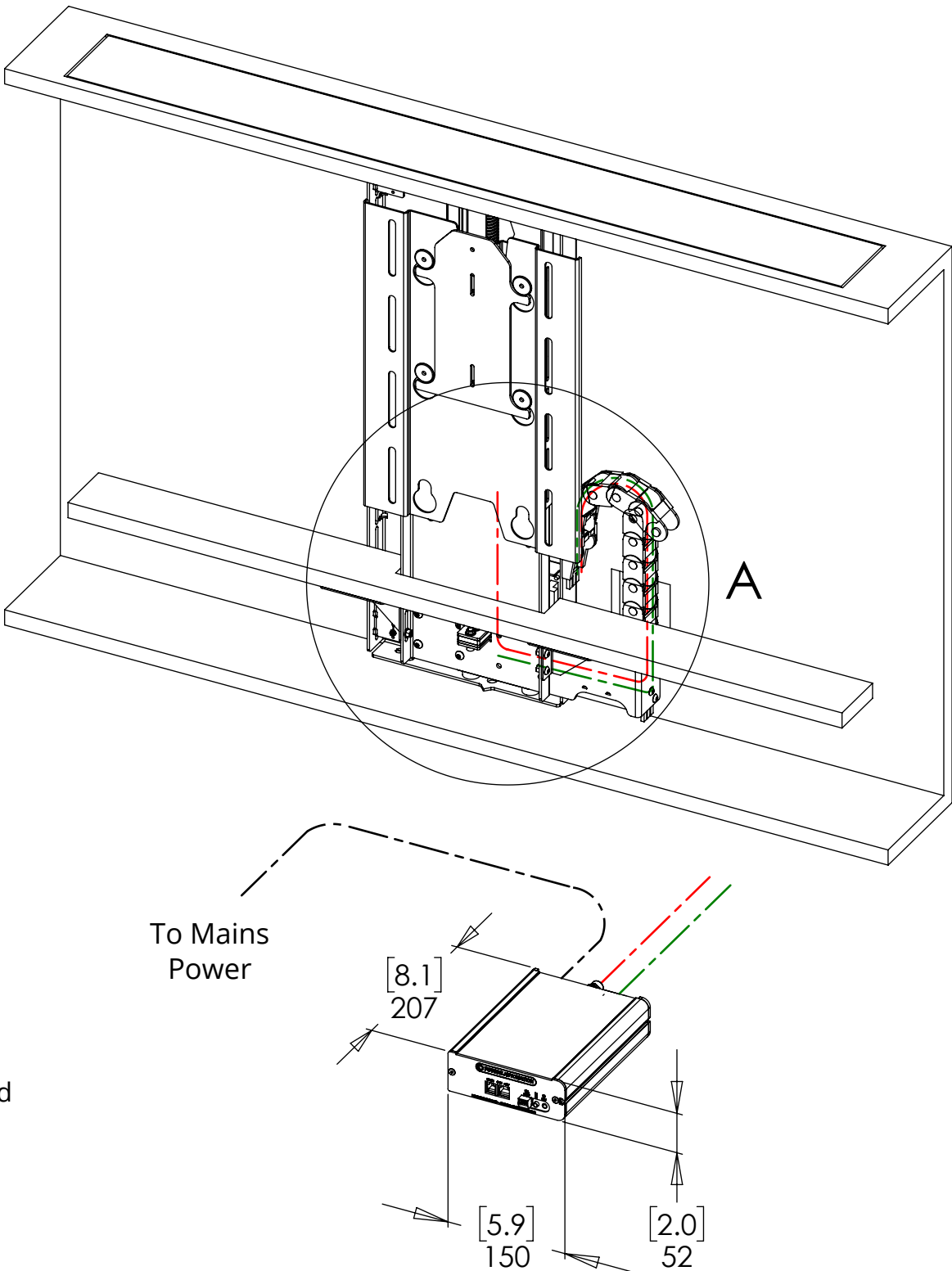
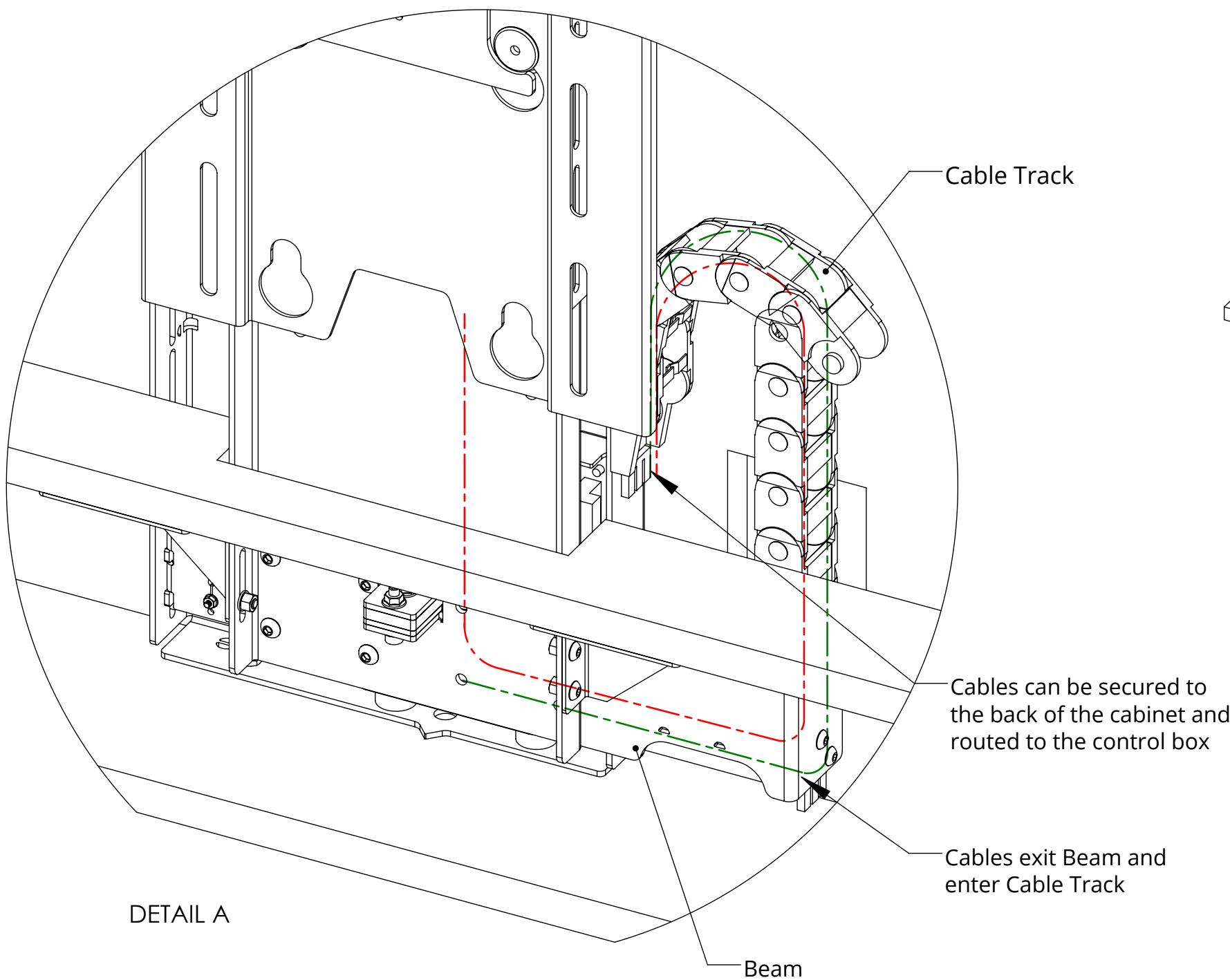


future automation

### CABLE ROUTING

Screen cables are routed behind the Base Panel and out the right side of the Beam into the Cable Track. Cables must be routed carefully to prevent any interference with the LSL beam as it operates.

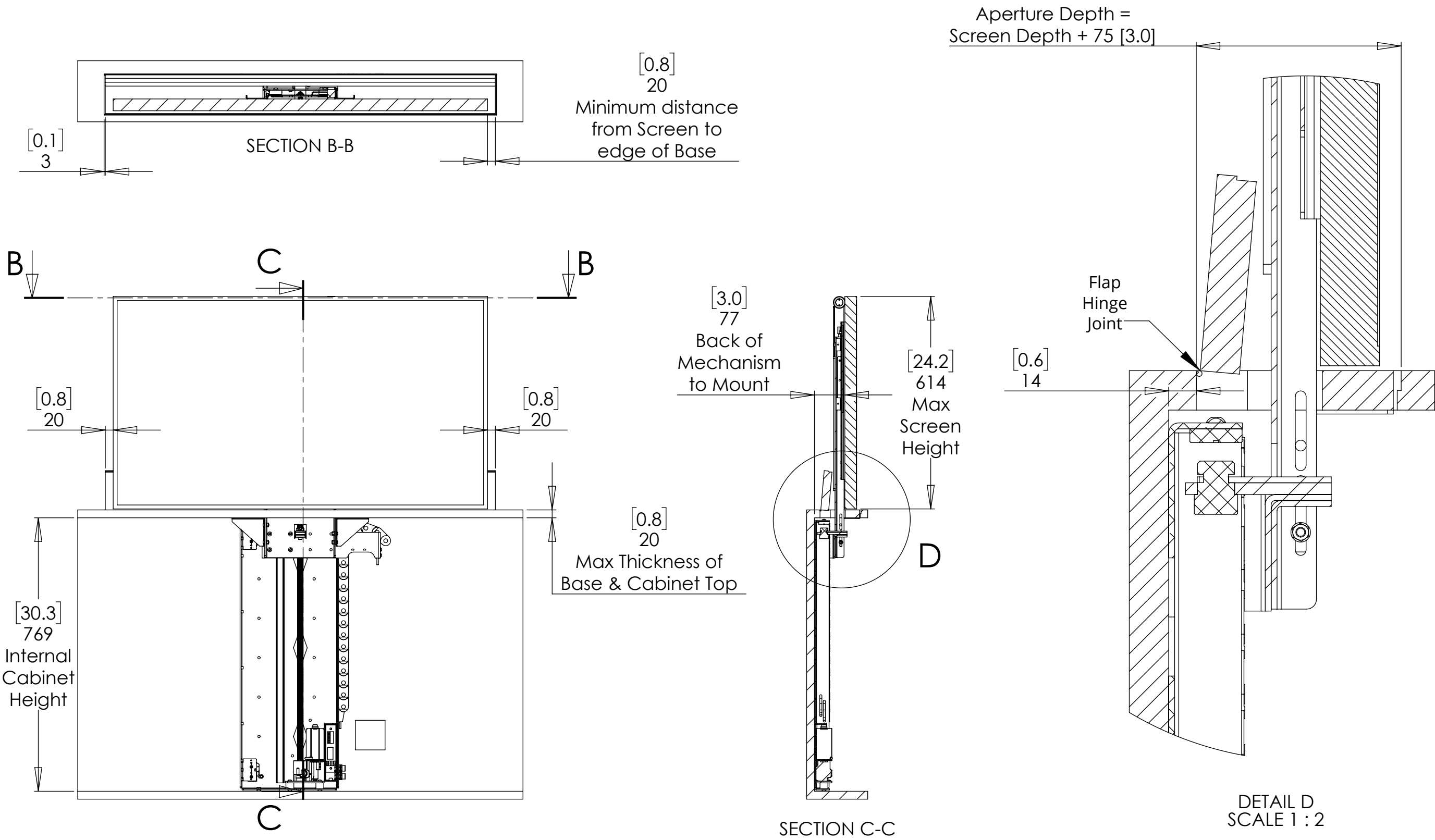
Screen and Mechanism cables should be routed to a control box in the bottom of the cabinet.



# LSL-PF 3

## LIFT SYSTEM LIGHT FOR PUSH UP FLAP

MECHANISM UP - IN CABINET



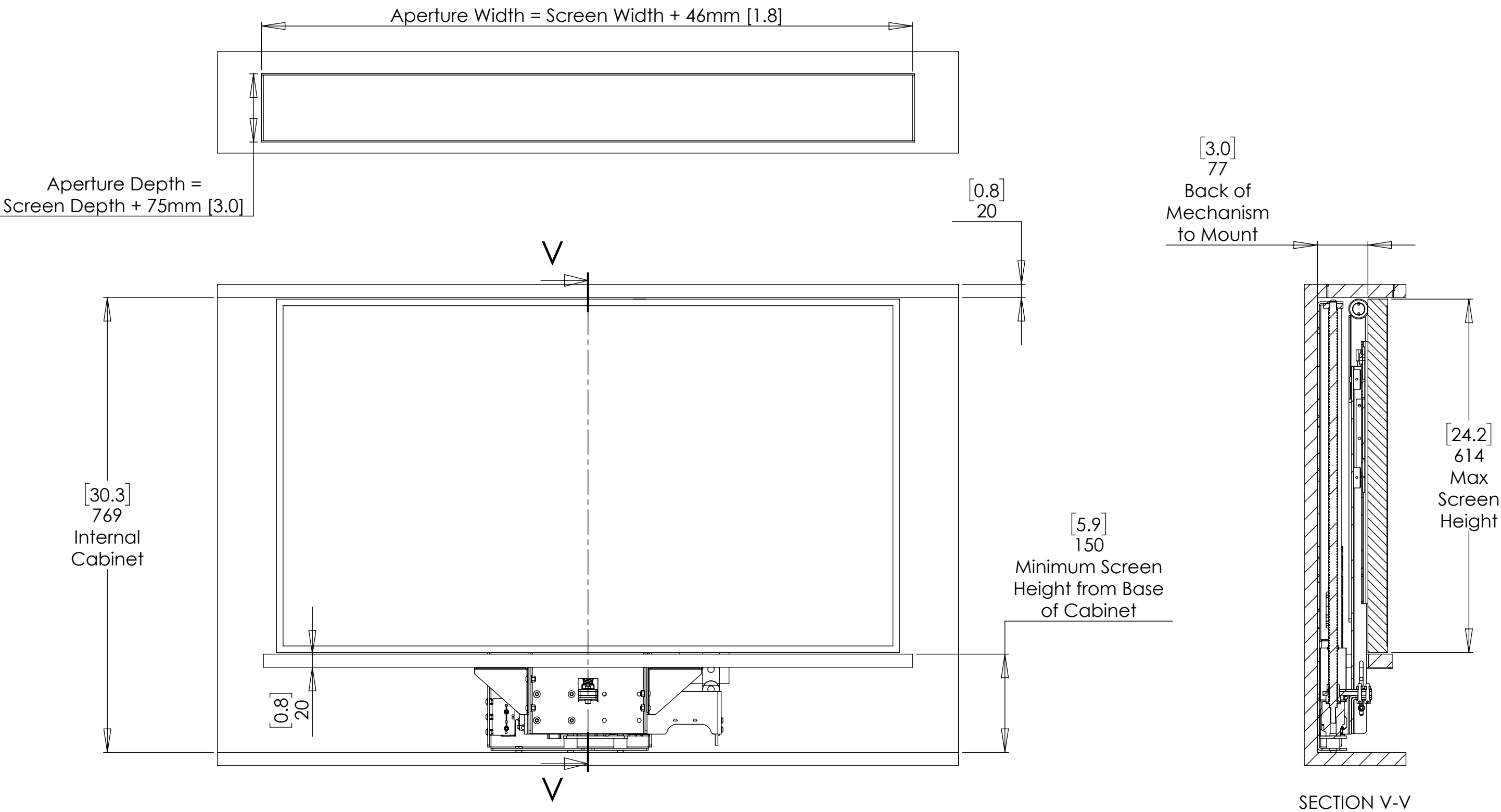
# LSL-PF 3

## LIFT SYSTEM LIGHT FOR PUSH UP FLAP



future automation

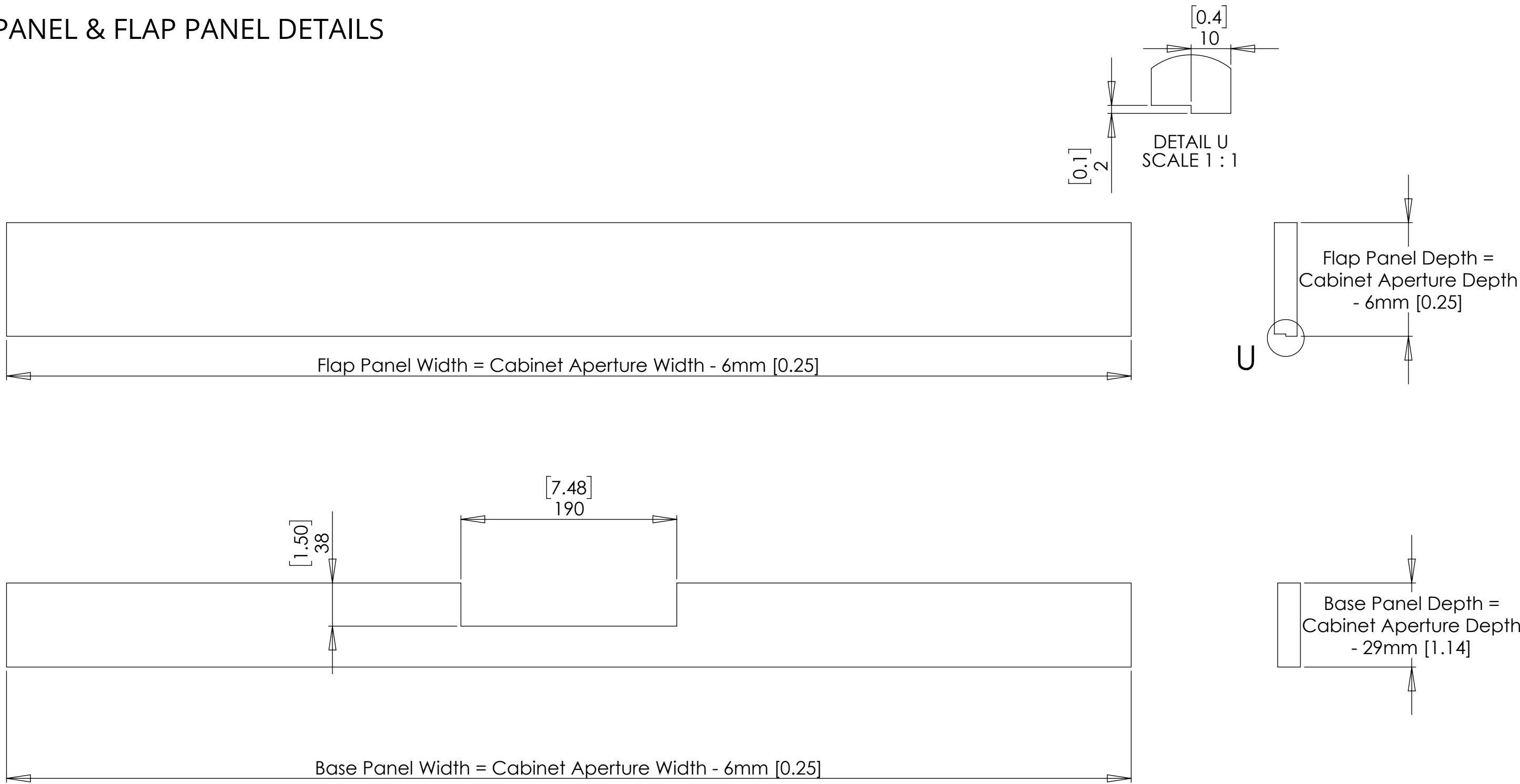
MECHANISM DOWN - IN CABINET



# LSL-PF 3

## LIFT SYSTEM LIGHT FOR PUSH UP FLAP

### BASE PANEL & FLAP PANEL DETAILS



# LSL-PF 3

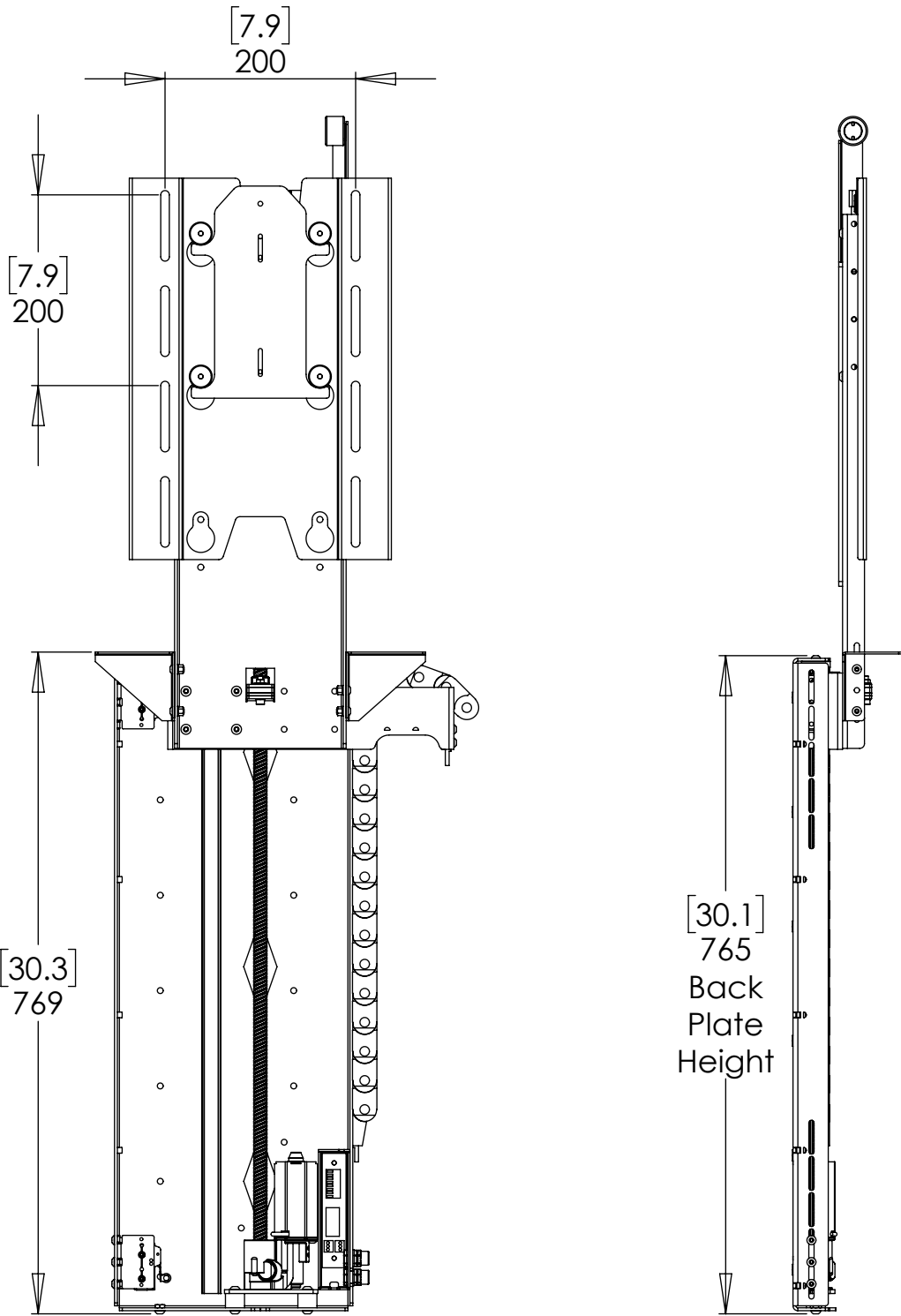
## LIFT SYSTEM LIGHT FOR PUSH UP FLAP



future automation

### OVERALL MECHANISM DIMENSIONS

MECHANISM UP



MECHANISM DOWN

