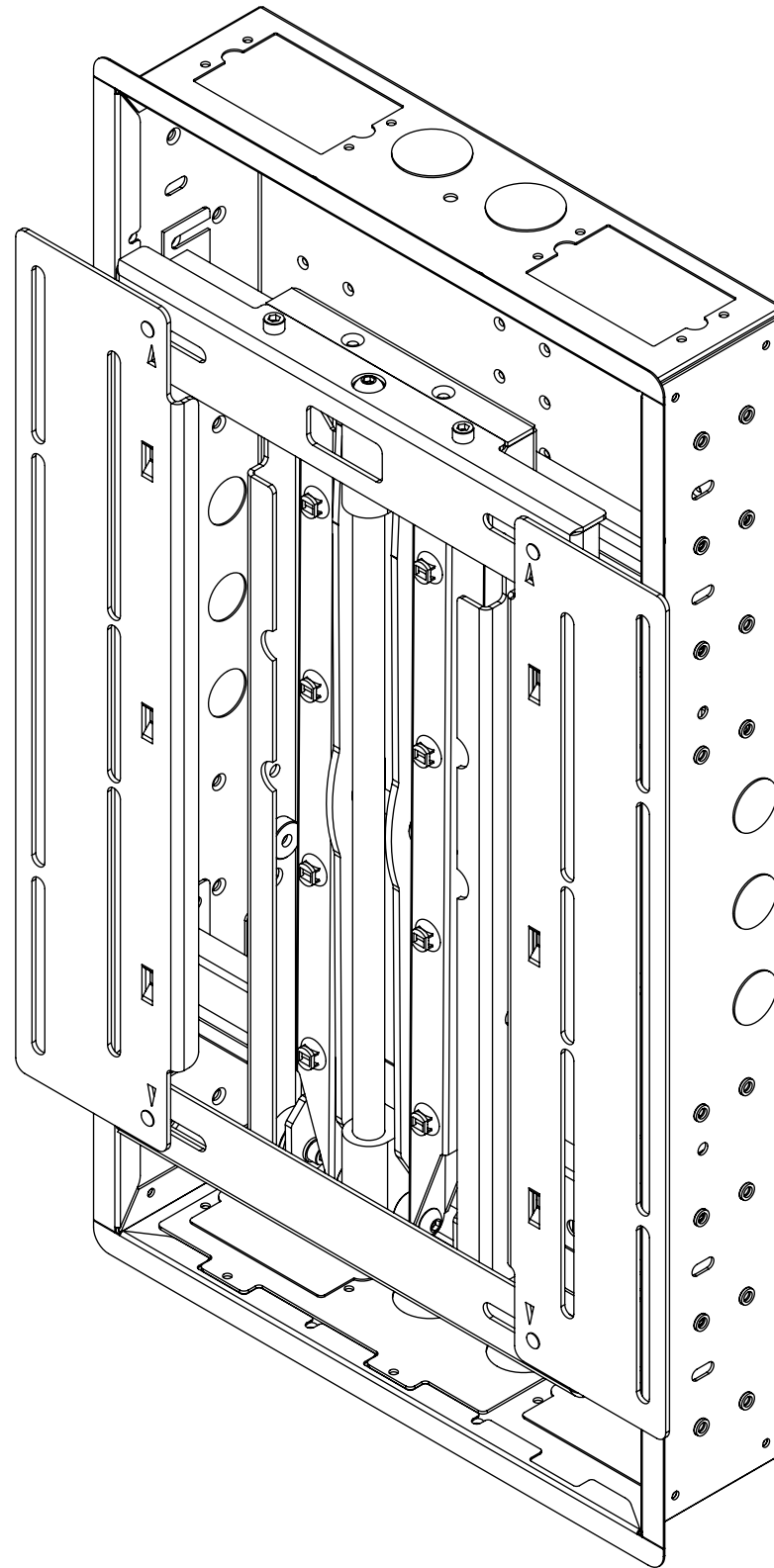


PS4026

PS40 BRACKET & WALL BOX 26



future automation



PS4026

PS40 BRACKET & WALL BOX 26

SPECIFICATION	MEASUREMENTS
Screen Size	40" - 75"
Maximum Weight Capacity	60Kg (132lb)
Maximum Extension From Wall	383mm (15.1")
Maximum Depth From Wall	35mm (1.4")
Maximum Lateral Adjustment	89mm (3.5")
Product Weight	25Kg (55lb)
Maximum Rotation	50 - Bi-directional with 43" screen - 38 with 55" - 32 with 65" - 27 with 75"
Mounting Patterns Supported	VESA 400, 300, 200, 100 W x 400, 300, 200, 100 H
Product Options / Features	Specific B&O and Loewe mounts / adapters, Custom RAL paint finishes
Package Contents	1 x PS40 Bracket, 1 x WB26 Wall box, 3 x Pairs of clamp brackets ,2 x PS bracket mount rails, 2 x Horizontal trim strips, 2 x Vertical trim strips, 1 x WattBox mount bracket set
Marine Suitable	No

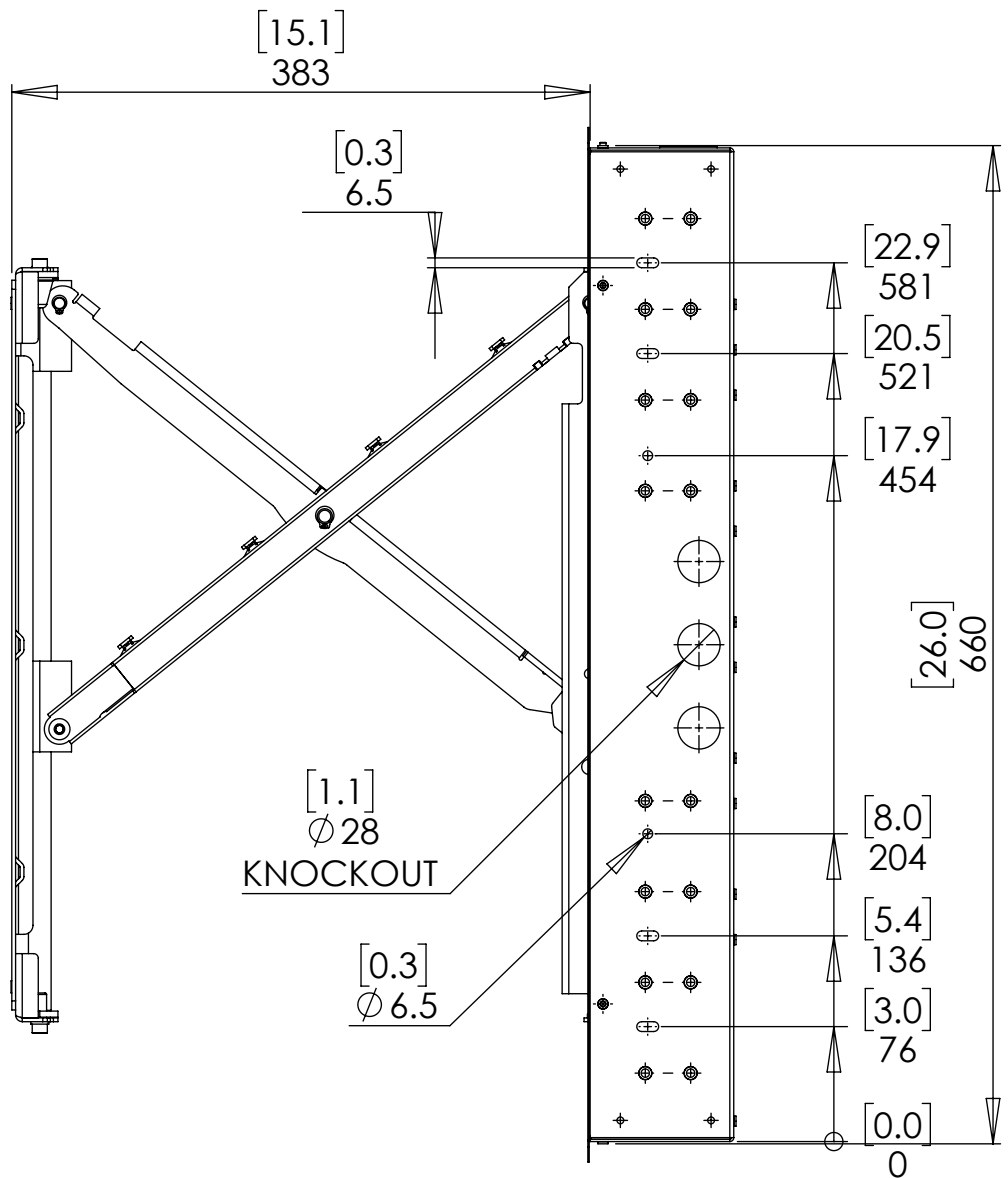
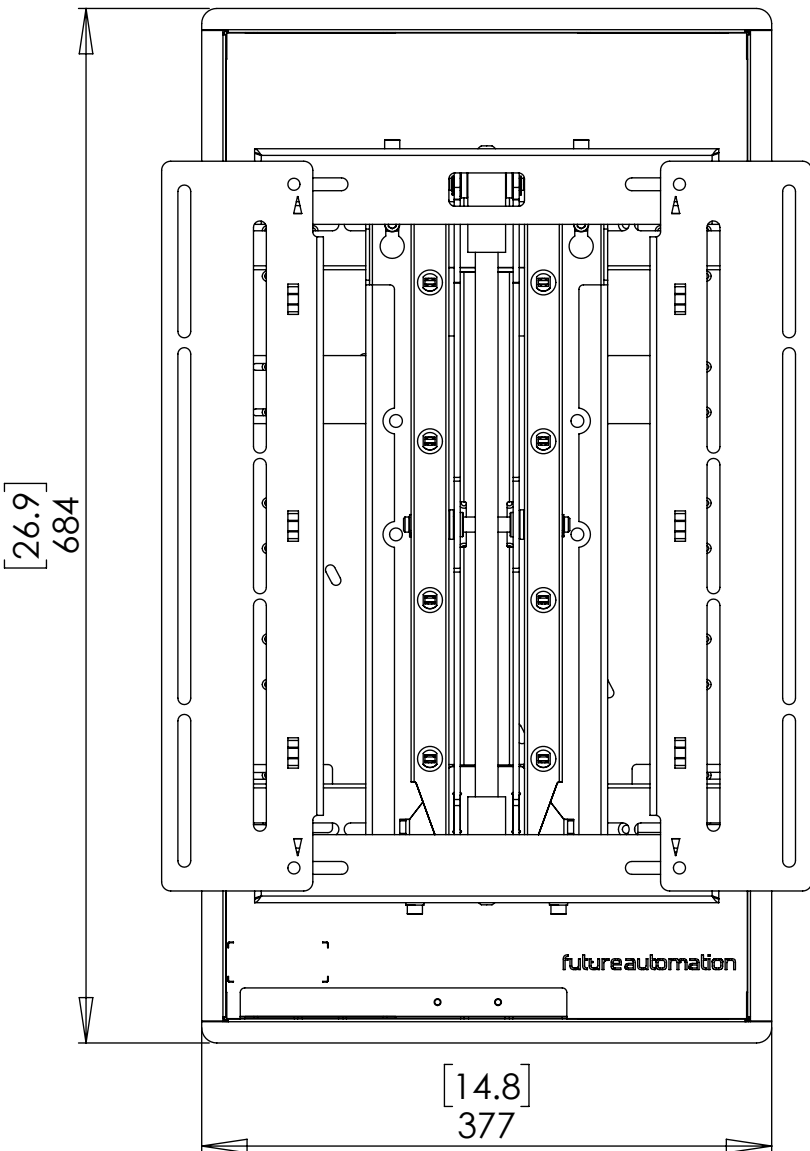
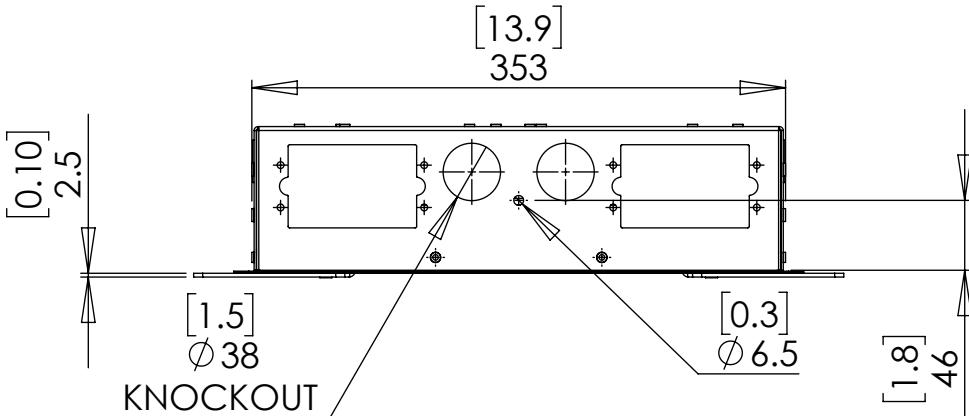
PS40 BRACKET & WALL BOX 26



DIMENSIONS

Contents include:

- 1 x PS40 Bracket
- 1 x WB26 Wall box
- 3 x Pairs of clamp brackets
- 2 x PS bracket mount rails
- 2 x Horizontal trim strips
- 2 x Vertical trim strips
- 1 x WattBox mount bracket set



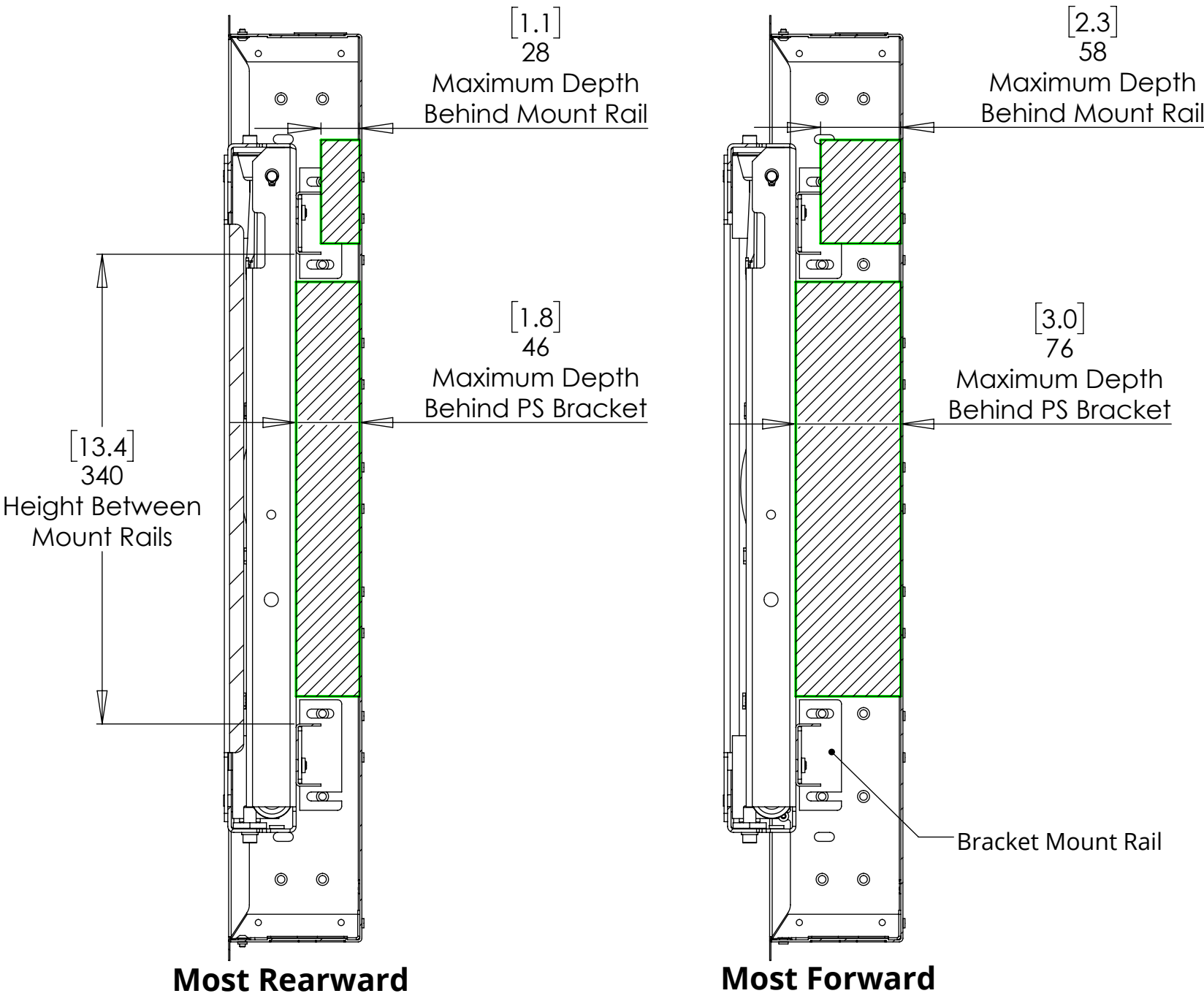
PS4026

PS40 BRACKET & WALL BOX 26

PS BRACKET INSTALLATION FEATURES

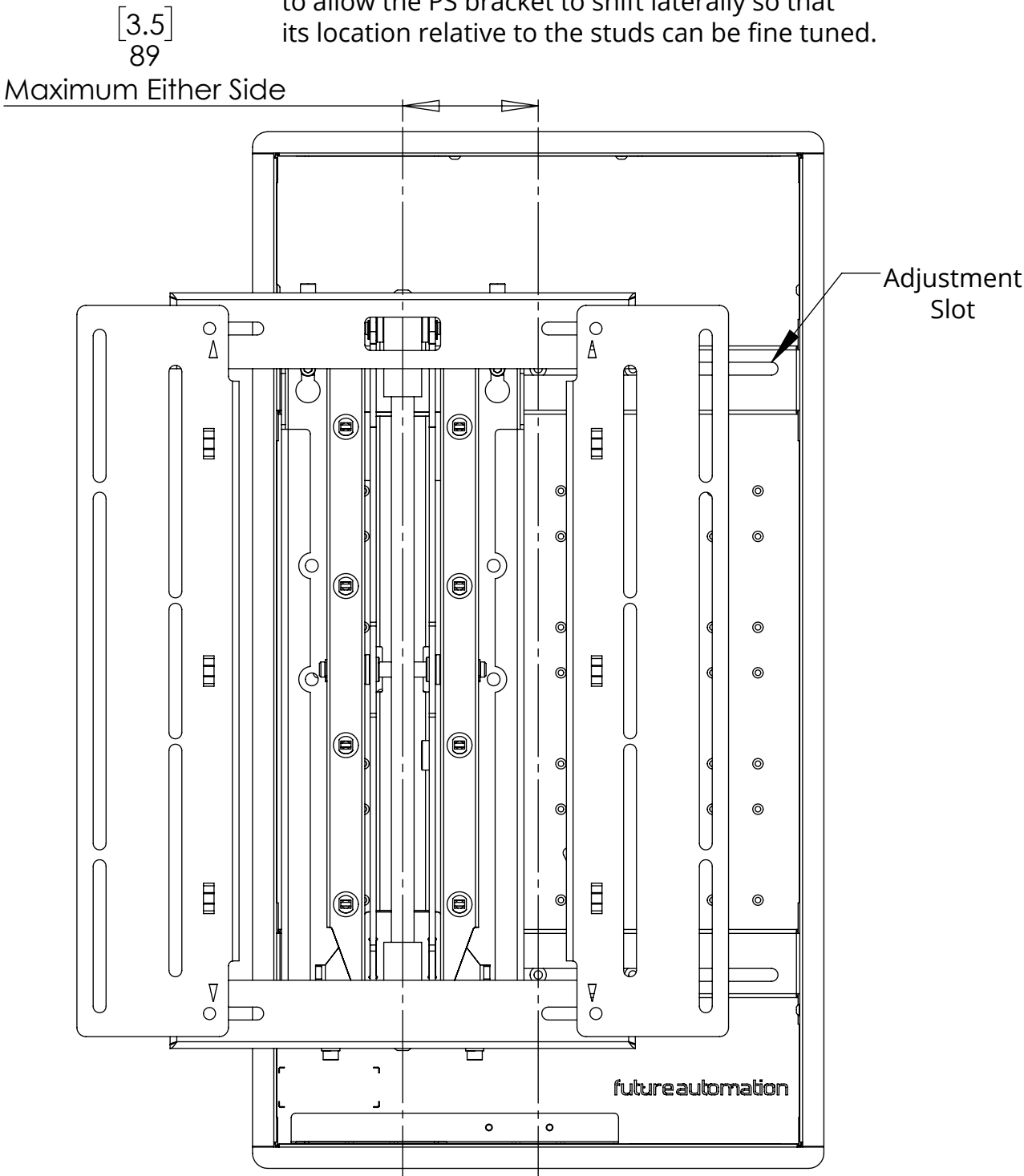
Depth Adjustment

The bracket mount rail has two fixing positions that allow the space behind the PS bracket to be increased or decreased as desired to accommodate accessories.



Lateral Adjustment

The bracket mount rail has slots on the front face to allow the PS bracket to shift laterally so that its location relative to the studs can be fine tuned.



PS4026

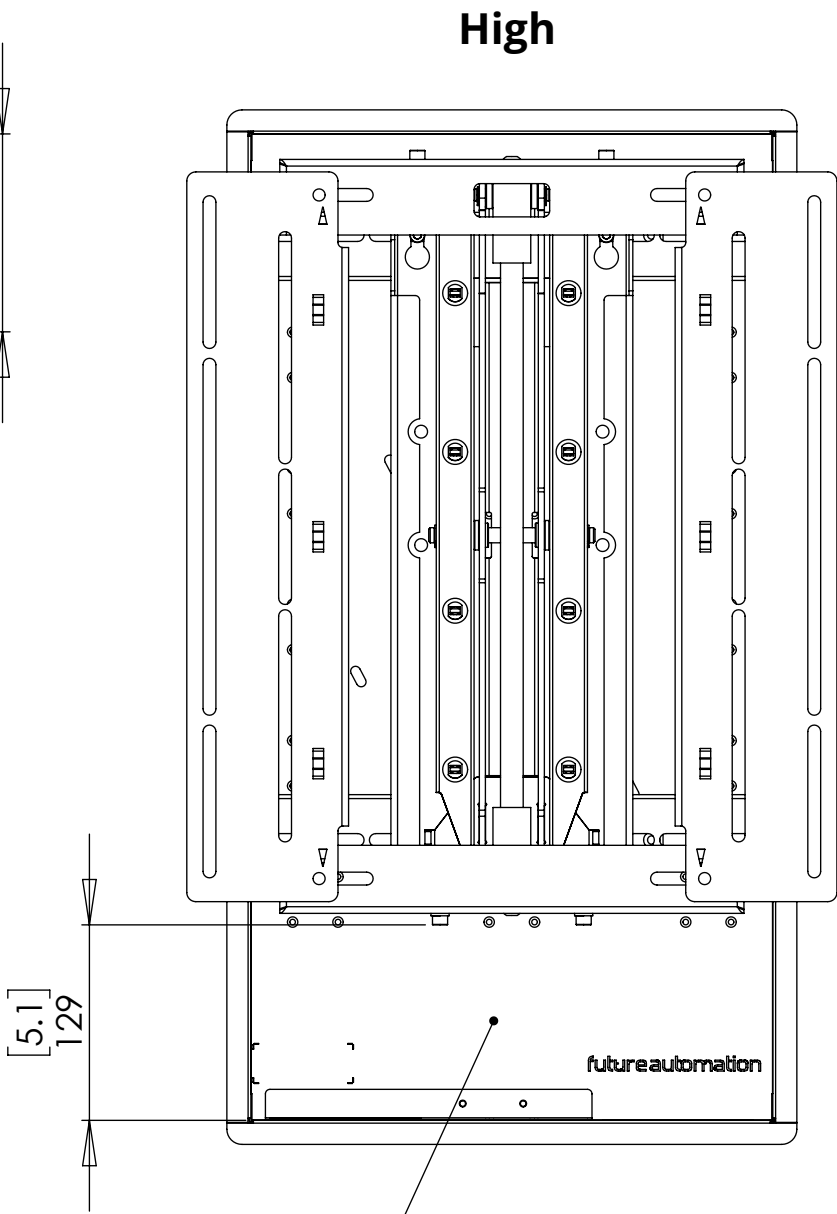
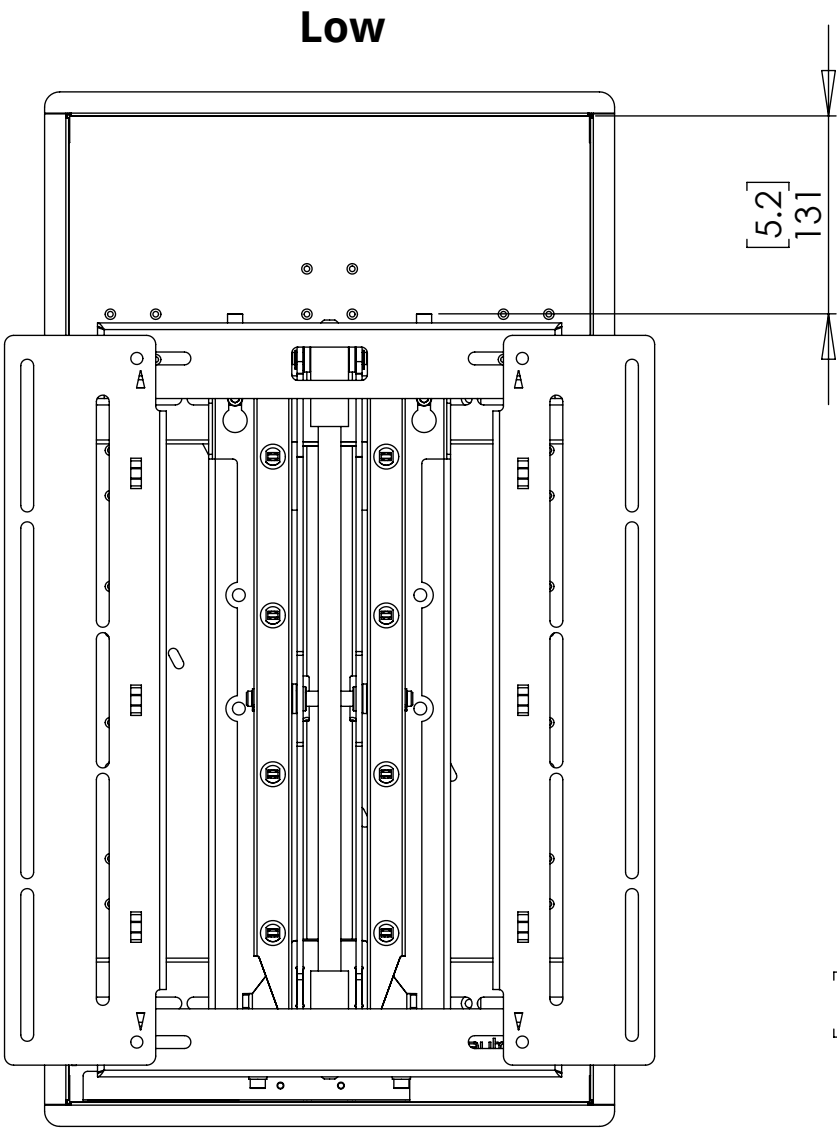
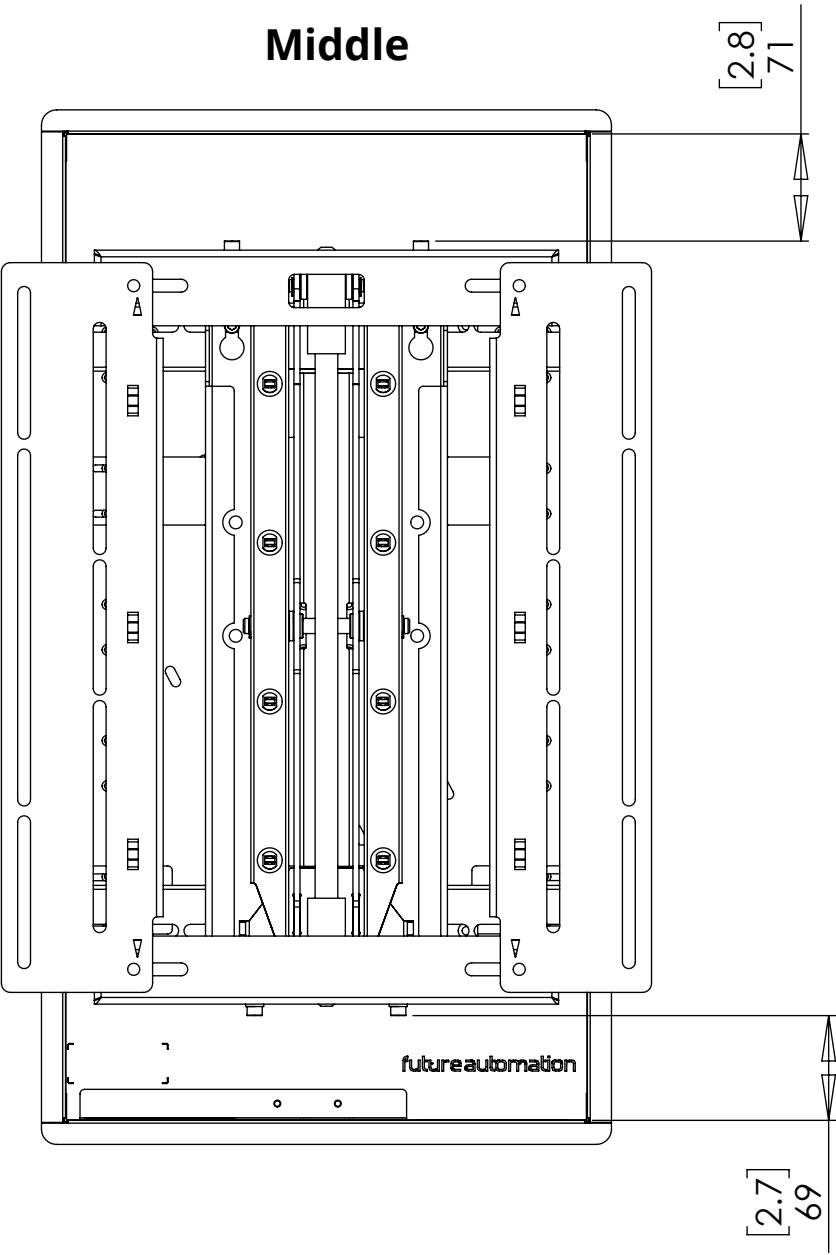
PS40 BRACKET & WALL BOX 26



future automation

PS BRACKET MOUNTING

The PS40 can be mounted in 3 different vertical positions within the wall box as desired to allow more room for accessories.



Space available for extra equipment/accessories